



Loving minds ♥ Hearts ♥ Hands

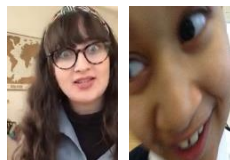
Weekly Newsletter



Google Classroom

Today you will have received an email or a phone call sharing the Google Classroom account details for the children in Year 1 - Year 6. The school is using this platform to send and receive learning to and from the children and staff will be able to give direct feedback to the children. Instructions will be sent via the email and can be found on the school website on each class page. Teachers will use this platform to share their **recorded videos**.

Silly Face Competition



Thank you to all those who voted for their favourite silly face on the back of the newsletter last week. The teacher with the most votes was Miss Barnett and Rehaan's impression was voted the silliest impression as well. Check each daily video for more silly faces.

School Half Term



School will be closed for the half term holidays and the last day of school will be next Friday 12th February. This will mean that no remote learning will be set for the week beginning Monday 15th February. School will reopen again on Monday 22nd February for children of critical workers who have been attending this half term and remote learning will be set again.

Friday 5th February 2021

Purple Mash BIG QUESTION

This week's big question was, **Why do people climb mountains?** Thank you to all those who responded. There were some amazing answers which included Logan who said: **To see the view, feel closer to nature and to feel like they accomplished something to be proud of.** Next week's big question is: **How can inaccurate information spread online?**

Home Learning Champions



Every week, each class teacher will select a champion from each class who has been really committed to their home learning. It is a difficult choice as so many of you are doing fantastic. This week's champions are: **Nancy, Cian, Rebecca, Chloe, Daisy, Jacob, Isla, Lukas and Daithy** Well done

Mental Health Week

Thank you to everyone who got involved with activities for mental health week this week. A selection of pictures and information can be found on p2.

Online Safety Day

Tuesday 9th February is Online Safety Day so please check for linked activities on Google Classroom and the daily video.

Mental Health Week

Thank you for supporting Children's Mental Health Week 2021. With schools partially closed, a national lockdown and lots of uncertainty, children's mental health and wellbeing has never been more important. We challenged children to think of ways that they could express themselves - finding ways to share their feelings, thoughts and ideas through activities that make them feel good. Here are some of the amazing submissions we had and be sure to look out for a very special video on our social media pages today!

